

Romantic Metasubjectivity Through Schelling And Jung: Unveiling the Profound Interplay of Self, Nature, and Consciousness

The Romantic era in philosophy and literature, spanning the late 18th and early 19th centuries, witnessed a profound shift in the understanding of subjectivity. This shift, known as Romantic metasubjectivity, challenged the Enlightenment's emphasis on rationality and objectivity, instead exploring the subjective experience, the interconnectedness of mind and nature, and the dynamic nature of consciousness. Two pivotal figures in this philosophical movement were Friedrich Wilhelm Joseph Schelling and Carl Gustav Jung. Their groundbreaking ideas on these themes have had a lasting impact on our comprehension of the human psyche and our place within the cosmos.



Romantic Metasubjectivity Through Schelling and Jung: Rethinking the Romantic Subject (Philosophy and Psychoanalysis) by Morris P. Fiorina

★★★★☆ 4.5 out of 5

Language : English
File size : 1484 KB
Text-to-Speech : Enabled
Screen Reader : Supported
Enhanced typesetting : Enabled
Print length : 300 pages



Schelling's Transcendental Idealism and the Dynamic Self

Friedrich Schelling's transcendental idealism played a pivotal role in shaping the Romantic concept of metasubjectivity. Schelling argued that the world we perceive is not an objective reality independent of our minds, but rather a product of the dynamic interplay between our subjective consciousness and the external world. According to Schelling, the self is not a fixed and unchanging entity but rather a fluid and evolving process, constantly interacting with and shaping its environment. This dynamic self, Schelling believed, was the key to understanding the interconnectedness of all things.

Jung's Depth Psychology and the Collective Unconscious

Carl Jung, a Swiss psychiatrist and psychoanalyst, further expanded on the Romantic understanding of metasubjectivity through his groundbreaking work on depth psychology and the collective unconscious. Jung believed that the human psyche is not merely a product of individual experiences but also contains a reservoir of universal, inherited memories and instincts. This collective unconscious, Jung argued, shapes our thoughts, feelings, and behaviors, connecting us to a shared human experience that transcends individual differences.

The Interplay of Schelling and Jung's Ideas

The convergence of Schelling's transcendental idealism and Jung's depth psychology provided a comprehensive framework for understanding Romantic metasubjectivity. Schelling's dynamic self, constantly interacting with the external world, mirrored Jung's belief in the interconnectedness of the individual psyche with the collective unconscious. Together, their ideas highlighted the fluidity of subjectivity, the importance of subjective

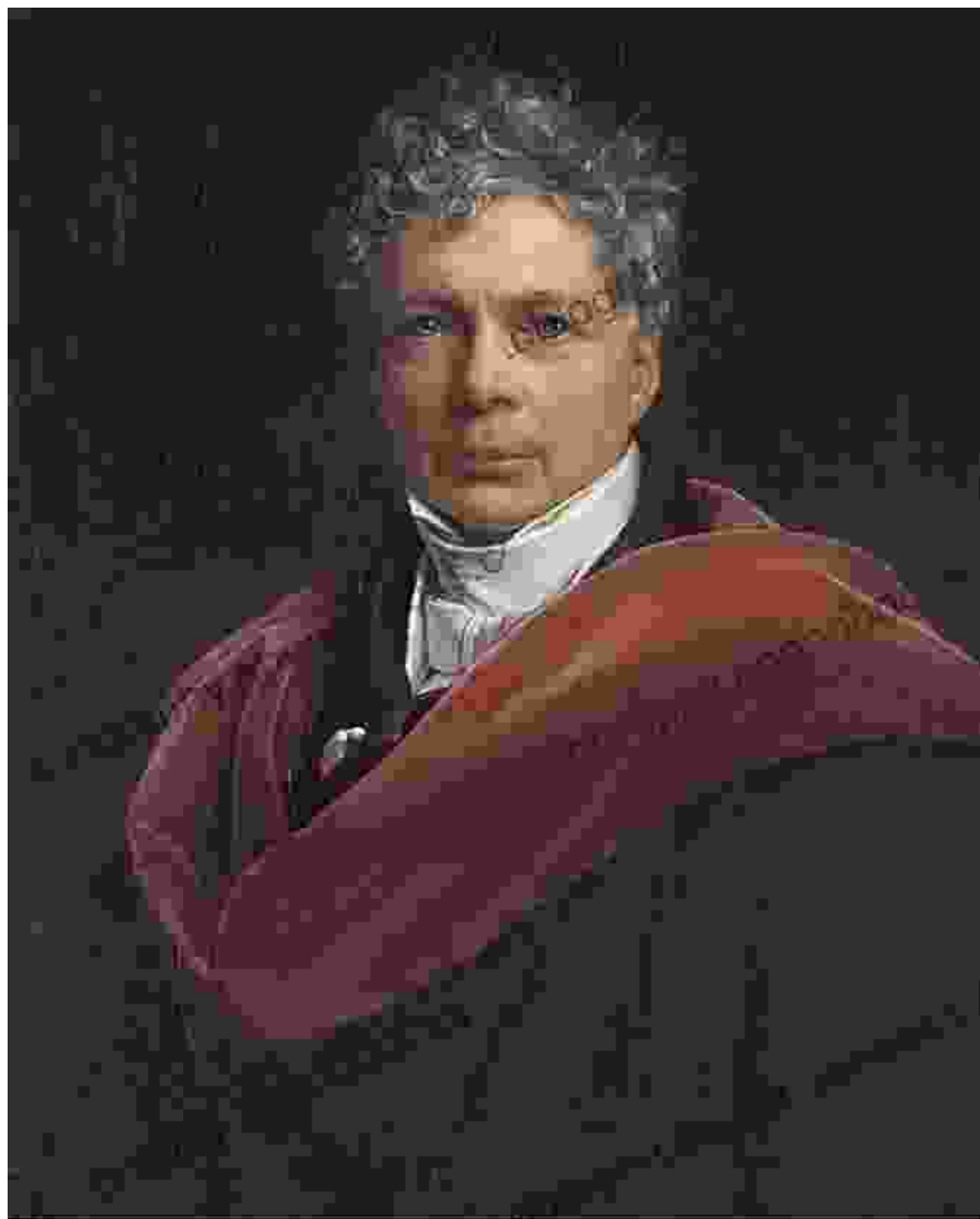
experience, and the profound interconnections between the individual and the collective, the conscious and the unconscious.

Implications for Our Understanding of Consciousness

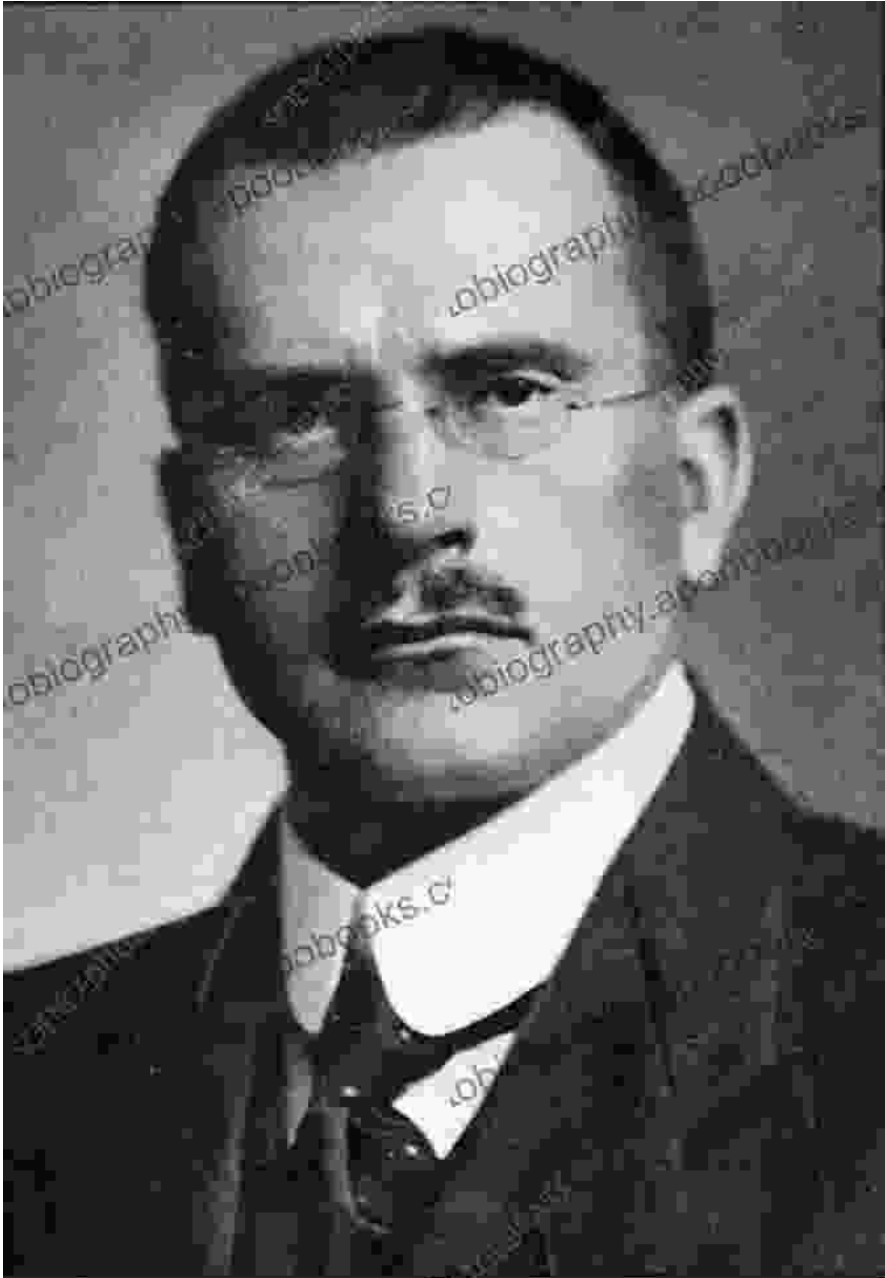
The Romantic metasubjectivity espoused by Schelling and Jung has profound implications for our understanding of consciousness. It challenges the notion of a fixed and unchanging self, instead emphasizing the dynamic and constantly evolving nature of our consciousness. It also underscores the interconnectedness of our minds with both the external world and the collective unconscious, suggesting that our subjective experiences are shaped by a myriad of factors beyond our immediate awareness.

Romantic metasubjectivity, as articulated by Schelling and Jung, remains a vital and influential force in contemporary thought. Its emphasis on the subjective experience, the dynamic nature of consciousness, and the interconnectedness of the individual with the collective has challenged traditional notions of reality and opened up new avenues for exploring the complexities of the human psyche. By delving into the depths of Romantic metasubjectivity, we can gain a deeper understanding of ourselves, our place within the cosmos, and the profound interconnectedness that binds us all.

- Image 1:



▪ Image 2:



▪ **Image 3:**



Romantic Metasubjectivity Through Schelling and Jung: Rethinking the Romantic Subject (Philosophy and Psychoanalysis) by Morris P. Fiorina

★★★★☆ 4.5 out of 5

Language : English

File size : 1484 KB

Text-to-Speech : Enabled

Screen Reader : Supported

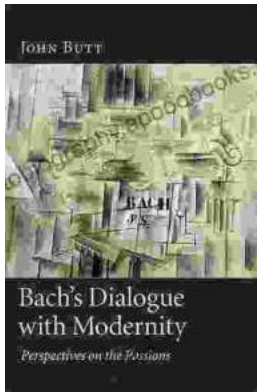
Enhanced typesetting : Enabled

Print length : 300 pages

FREE

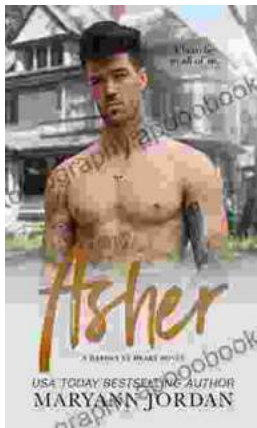
DOWNLOAD E-BOOK





Bach Dialogue With Modernity: A Journey Through Time and Harmony

Prelude: Bach's Timeless Legacy Johann Sebastian Bach, the Baroque master, crafted music that continues to resonate across centuries. His...



Asher Heroes At Heart Maryann Jordan: The Essential Guide to Inspiring True Leaders

Are you ready to unlock your leadership potential and make a lasting impact on the world? Asher Heroes At Heart by Maryann Jordan is the essential...